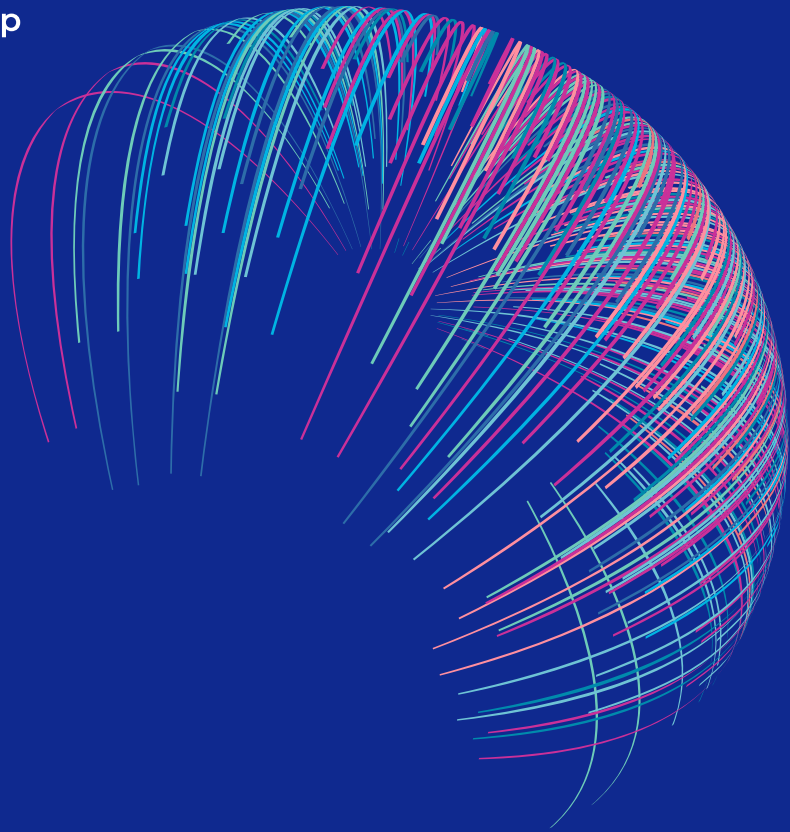


Princeton Digital Group
Internet Infrastructure



|

TOKYO **TY1**

Saitama City is one of the commercial centers of the Greater Tokyo area that serves the Saitama Prefecture, North Kanto, and northeast Honshu. Located 30 km north of central Tokyo, PDC's Tokyo facility TY1 has a total land area of 33,047 m², and will be ready to be in service by Q2 2024.

With stable grid and mature connectivity infrastructure, it is well poised to serve the many hyperscalers and cloud-ready businesses in the Greater Tokyo Area and beyond. TY1 is easily accessible to Tokyo and major airports through expressway routes and high-speed rails.

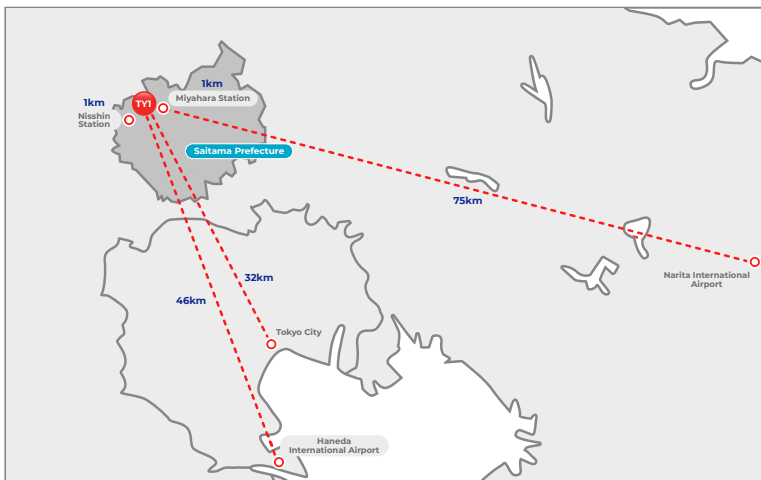
TOKYO - TYI

Location	Kita-ku, Saitama, Japan
Latitude/Longitude	35.935982, 139.607999
Land Area	33,047 m ²
Gross Floor Area	Phase 1 29430 m ² Phase 2 29430 m ²
IT Load	Phase 1 48.5 MW Phase 2 48.5 MW
Design PUE	≤1.23
RFS Timeline	Phase 1 Q2 2024 Phase 2 Q2 2026



TRANSPORTATION

Saitama is located 30 km north of central Tokyo, it offers easy access to international airport, expressways and railway access.



RAIL

Nishin JR Station <1 km
Miyahara JR Station <1 km



ROAD

Accessible to and from Shuto Expressway serving the Greater Tokyo Area via the Saitama Routes:
S1 Kawaguchi Route
S2 Saitama Shintoshin Route
S5 Omiya Route



AIR

Narita International Airport 75 km
Haneda International Airport 46 km