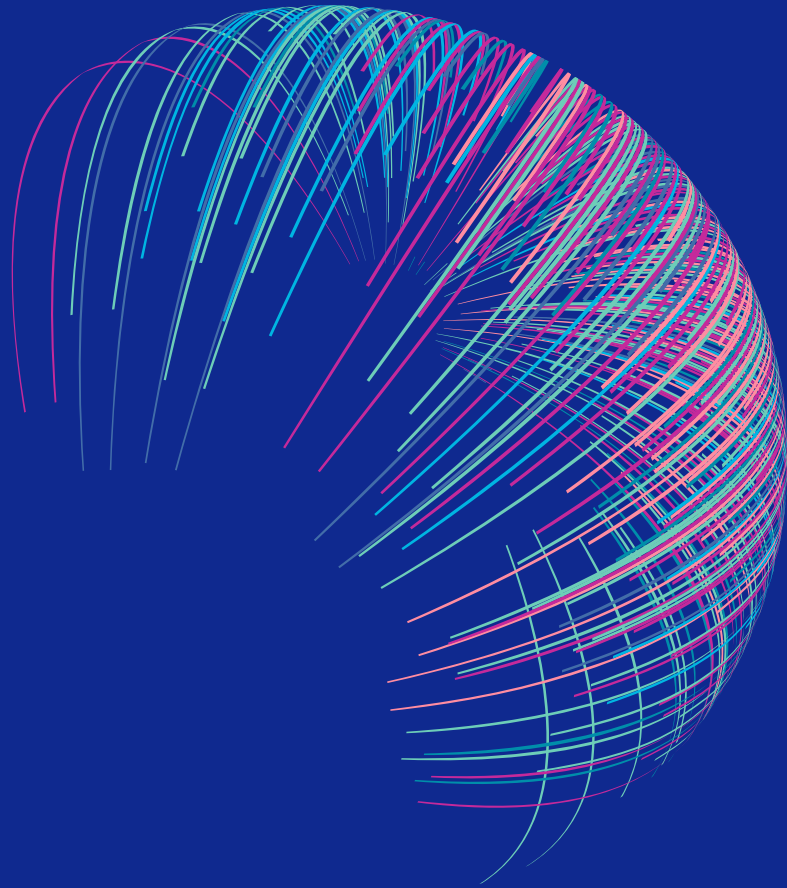


Princeton Digital Group

Internet Infrastructure



## SINGAPORE SG1

Situated in the heart of Singapore, 15 minutes from town and 20 minutes from Changi International Airport, our data center in the city state is a strategic location for hyperscalers and enterprises that are looking to expand and require additional capacity.

Our facility offers clients various services from whitespace raised floor rentals to storage and staging rooms on demand. It is located near the existing cloud and network hub of Tai Seng, while also housing the SGX trading platform and other FSI ecosystems. As the hub of South East Asia, Singapore is the largest data center market in the region and is also one of the top colocation markets in the world. Nearly all the major hosting and cloud providers globally have built a presence in Singapore.

## DATA CENTER OVERVIEW

Address: \_\_\_\_\_ 7000 Ang Mo Kio Ave 5 SG 569877  
Latitude/Longitude: \_\_\_\_\_ 1.378641, 103.872907  
Gross Floor Area: \_\_\_\_\_ 16,148 m<sup>2</sup>  
Slab-to-slab Height: \_\_\_\_\_ 6m  
Floor Loading: \_\_\_\_\_ 12.5kN/m<sup>2</sup>  
Loading Bays: \_\_\_\_\_ 2  
Staging Room: \_\_\_\_\_ available  
Design PUE \_\_\_\_\_ 1.45

Data center, offices and ancillary plant rooms are located on the ground floor

## COOLING

- High-efficiency water-cooled chillers with oil-free centrifugal compressor technology
- Chilled Water Buffer Tank catering continuous cooling for 10-minutes at full load
- Bi-directional piping design
- Dual-feed AHUs
- CRAC units on 2N power supply of up to N+20% resiliencies
- Generator supported mechanical services

## TELECOMMUNICATIONS

- Carrier neutral network services, multiple service providers (Singtel, Starhub, Superloop, SPTel) and product offerings
- Two (2) diverse fiber entry vaults, 180m separation
- Two (2) Main Distribution Frame (MDF) rooms
- Two (2) Meet-Me-Rooms (MMR), diverse network distribution paths

## ONSITE OPERATIONAL SUPPORT

- Secure storage and staging rooms available for use
- Office space available for BCP
- 24x7 onsite Remote Hands engineers
- 24x7 onsite critical facility management engineers
- Continuous monitoring of Data Center Infrastructure Management (DCIM) and Building Management System (BMS) by the operations team
- Real-time monitoring and alarm notifications of all critical data center infrastructure

## Princeton Digital Group

Internet Infrastructure

To get a first-hand look into any of our data centers, e-mail us at [visitus@princeton dg.com](mailto:visitus@princeton dg.com) for a guided tour.

## POWER

- Battery Life: 10 minutes at full load
- Two (2) diverse and redundant 22kV utility power supplies and substations
- Roadmap to upgrade to 66kV substations
- Diesel generators in N+1 redundancy for IT Load
- Underground fuel tank providing up to 24hrs of support at full load
- Distributed Redundant Uninterrupted Power Supply (UPS)

## SMOKE DETECTION AND FIRE SUPPRESSION SYSTEMS

- VESDA
- 2 hour fire-rated doors and partitions
- Pre-action, cross zone Sprinkler System
- Gas Suppression System (NOVEC 1230)
- 24x7 decentralized alarm monitoring system linked directly to an external fire monitoring agency

## SECURITY & ACCESS CONTROL

- 2FA data center security accessible by access ID and biometrics
- 3m high anti-climb perimeter fencing
- 24x7 onsite security
- 24x7 onsite manned guards
- 24x7 comprehensive CCTV coverage with programmed video-motion detection
  - Recordings of 25 fps at 1 megapixel and kept for 90 days
  - All monitoring systems supplied with dual power with no single failure point
  - Video management system equipped with failover redundancy network video recording server

## ACCREDITATIONS

- SOC1 and SOC2 Type 2
- ISO 27001, 9001, 45001, 50001 : 2018
- SS 564, Part 1 : 2020
- OSPAR Attestation
- TVRA
- Uptime Tier 3 M&O
- OCP Ready™
- bizSAFE Level STAR
- LowCarbonSG recognized

participant

[www.princeton dg.com](http://www.princeton dg.com)

© 2021 Princeton Digital Group. All Rights Reserved